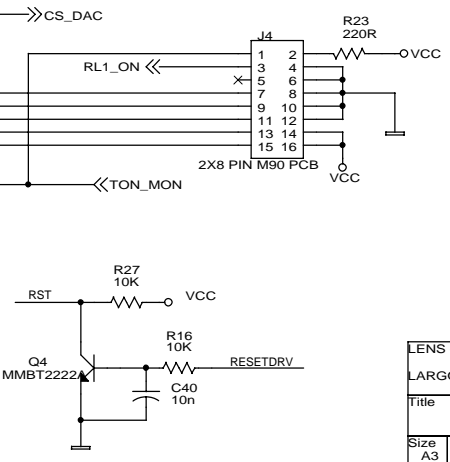
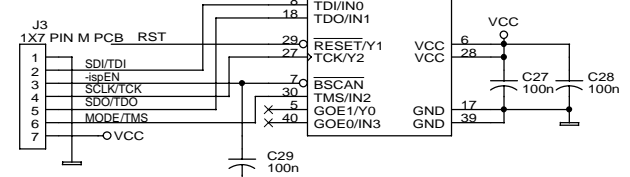
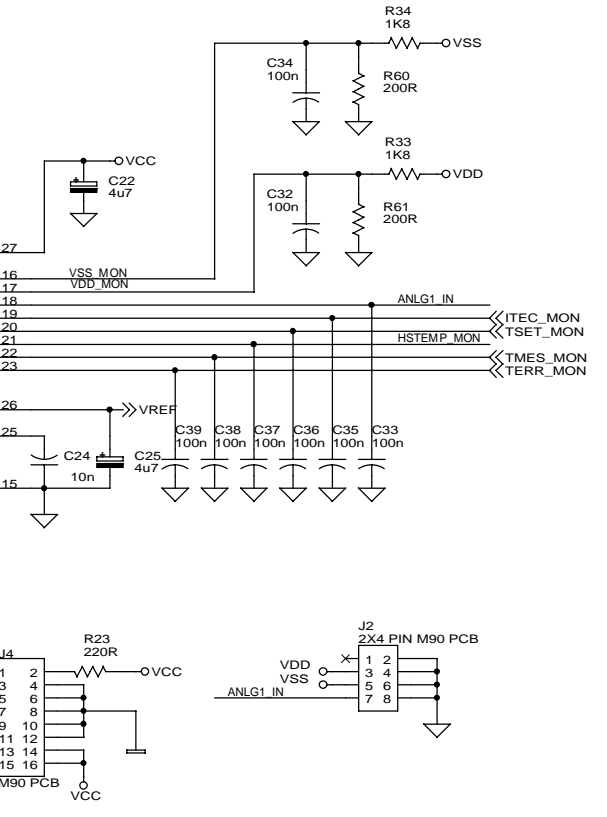
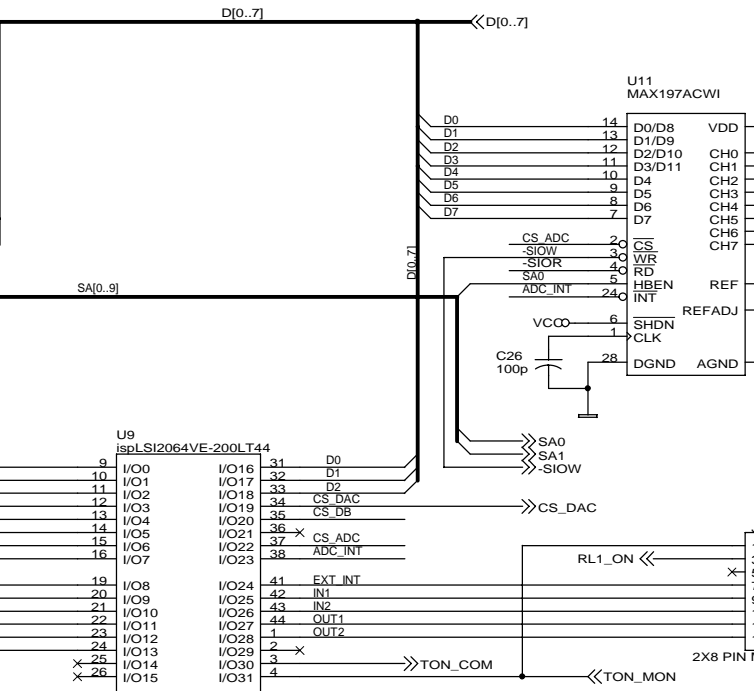
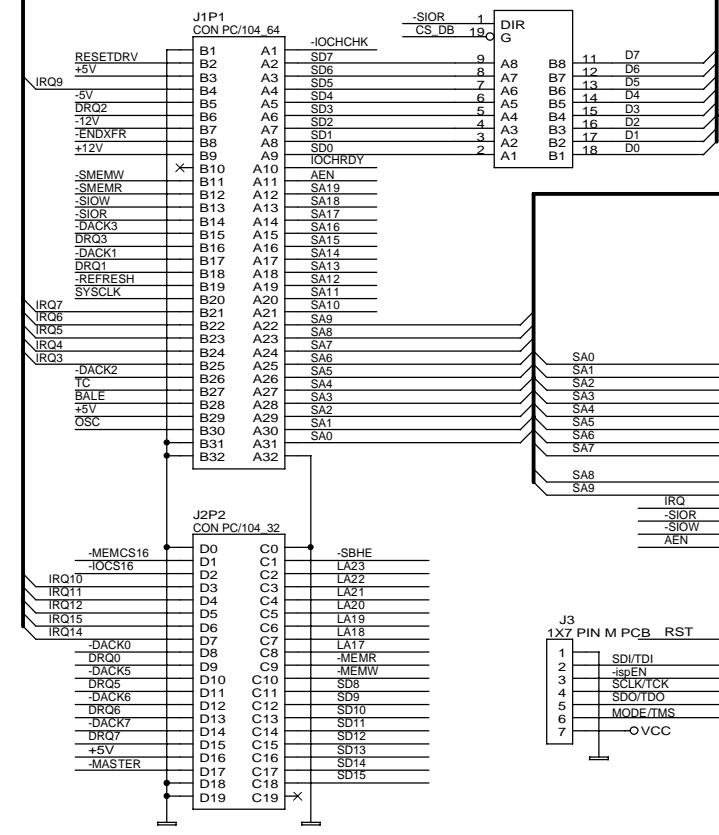
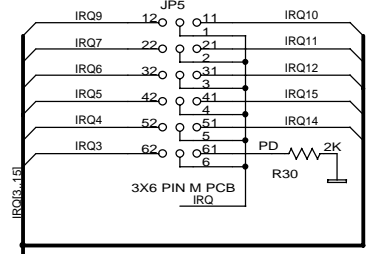
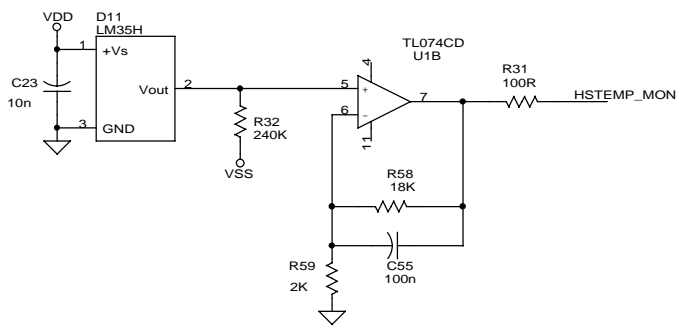
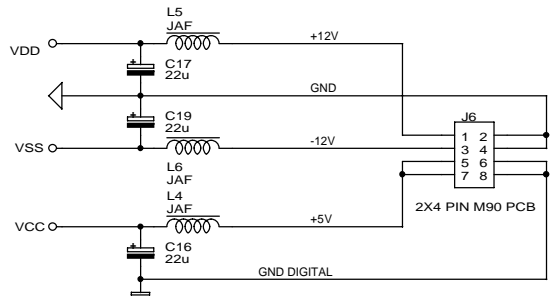


AAA - Saldare R62 e C56 direttamente sul PCB

LENS - UNIVERSITA' DI FIRENZE - LARGO E. FERMI, 2 50125 FIRENZE		
File	TEMPERATURE CONTROLLER (ANALOG)	
Size	Document Number	Rev
A3	pc104_temp_contr_board_Rev01.dsn	
Date:	Thursday, January 08, 2004	Sheet 1 2 of



LENS - UNIVERSITA' DI FIRENZE - LARGO E. FERMI, 2 50125 FIRENZE	
Title TEMPERATURE CONTROLLER (LOGIC)	
Size A3	Document Number pc104_temp_contr_board_Rev01.dsn
Date: Thursday, January 08, 2004	Sheet 2 of 2

Revised: Friday, March 23, 2007

Revision:

-LENS- Università di Firenze
Largo E. Fermi, 2

Bill Of Materials March 23,2007 13:07:23 Page1

Item	Quantity	Reference	Description	Part	Value	Supplier	Ref
1	35	C1,C2,C3,C5,C6,C7,C9,C10, C11,C12,C14,C15,C20,C27, C28,C29,C30,C31,C32,C33, C34,C35,C36,C37,C38,C39, C41,C42,C43,C44,C45,C52, C53,C55,C56	Cond. Cer. 50V	100n	RS	264-4416	
2	1	C4	Cond. Cer. 50V	1n	RS	264-4321	
3	1	C8	Cond. Poly. 50V	3u3	RS	249-1919	
4	6	C13,C16,C17,C19,C48,C54	Cond. Tant. 25V	22u	RS	262-4636	
5	1	C18	Cond. Cer. 50V	OPEN			
6	4	C21,C23,C24,C40	Cond. Cer. 50V	10n	RS	298-9309	
7	2	C22,C25	Cond. Tant. 25V	4u7	RS	249-1925	
8	1	C26	Cond. Cer. 50V	100p	RS	298-9258	
9	3	C46,C49,C50	Cond. Cer. 50V	1u	RS	434-8081	
10	1	C47	Cond. Cer. 50V	100p	RS	262-9258	
11	1	C51	Cond. Poly. 50V	4u7	RS	249-1925	
12	3	D1,D2,D8	Diodo LS4148		RS	443-3690	
13	1	D11	Circ. Integr. LM35H	DISCO SRL			
14	1	JP5	Connettore 3X6	PIN M PCB			
15	1	J1	Connettore 2X8	PIN M90PCB	Disco	5/5582	
16	2	J2,J6	Connettore 2X4	PIN M90 PCB	Disco	5/5580	
17	1	J3	Connettore 1X7	PIN M PCB			
18	1	J4	Connettore 2X8	PIN M90 PCB	Disco	5/5582	
19	1	J1P1	Connettore CON PC/104_64		Farnell	359-956	
20	1	J2P2	Connettore CON PC/104_32		Farnell	359-907	
21	8	L1,L2,L3,L4,L5,L6,L7,L8	Induttanza	JAF	RS	233-5077	
22	2	Q3,Q4	Transistor MMBT2222A		RS	112-6181	
23	1	RL1	Relay RELAY TQ2-5V		RS	113-8825	
24	1	R1	Res. 0.25W 1%	10R	RS	223-0152	
25	3	R2,R4,R48	Res. 0.25W 1%	680R	RS	223-0405	
26	4	R3,R40,R57,R58	Res. 0.25W 1%	18K	RS	223-0590	
27	2	R5,R39	Res. 0.25W 1%	1R	Farnell	360-1365	
28	3	R6,R19,R20	Res. 0.25W 1%	2K2	RS	223-0477	
29	6	R7,R13,R24,R29,R38,R46	Res. 0.25W 1%	22K	RS	223-0607	
30	6	R8,R11,R22,R25,R31,R45	Res. 0.25W 1%	100R	RS	223-0297	
31	2	R9,R55	Res. 0.25W 1%	1M	RS	223-0821	
32	1	R10	Res. 0.25W 1%	OPEN			
33	2	R12,R53	Res. 0.25W 1%	8K2	RS	223-0556	
34	1	R14	Res. 0.25W 0.1%	10K	RS	215-3493	
35	1	R15	Res. 0.25W 1%	5K6	RS	223-0534	
36	9	R16,R17,R18,R21,R27,R28, R37,R51,R52	Res. 0.25W 1%	10K	RS	223-0562	
37	1	R23	Res. 0.25W 1%	220R	RS	223-0332	
38	3	R26,R36,R41	Res. 0.25W 1%	1K	RS	223-0427	
39	2	R30,R59	Res. 0.25W 1%	2K	Farnell	321-8090	
40	1	R32	Res. 0.25W 1%	240K	Farnell	321-8340	
41	2	R34,R33	Res. 0.25W 1%	1K8	RS	223-0461	
42	1	R35	Res. 0.25W 1%	39K	RS	223-0635	
43	2	R47,R42	Trim. Oriz. 10G.	5K	RS	183-3211	
44	2	R44,R43	Res. 0.25W 1%	100K	RS	223-0691	
45	1	R49	Res. 0.25W 1%	3K3	RS	223-0499	
46	1	R50	Trim. Oriz. 10G.	100K	RS	183-3255	

47	1	R54	Trim. Oriz. 10G.	20K	RS 183-3233 / Farnell	321-8211
48	1	R56	Res. 0.25W 1%	0R15	RS 223-0994	
49	2	R60,R61	Res. 0.25W 1%	200R	Farnell	321-7879
50	1	R62	100R	RS 223-0297		
51	3	U1,U2,U4	Circ. Integr.	TL074CD	RS 857-929	
52	1	U3	Circ. Integr.	MX7534JCWP	EC_MAXIM	
53	1	U5	Circ. Integr.	INA114AU	RS 288-755	
54	1	U6	Circ. Integr.	PA60DX	KEVIN SCHURETER S.P.A.	
55	1	U8	Circ. Integr.	74HC245D	RS 113-0174	
56	1	U9	Circ. Integr.	ispLSI2064VE-200LT44	RS 414-2158	
57	1	U11	Circ. Integr.	MAX197ACWI	EC_MAXIM	